



**GIA**<sup>®</sup>

FALL 2018

# EDUCATION

Quarterly

## 2019 GLOBAL CLASS SCHEDULES



GEMOLOGY

DESIGN

CRAFTSMANSHIP

TECHNOLOGY

SCIENCE



# TABLE OF CONTENTS

The Value of a GIA Education..... 03

- 📍 GIA On Campus Education ..... 04
- 💻 GIA Distance Education ..... 05

## GEMOLOGY

- GG Graduate Gemologist®..... 06
- GD Graduate Diamonds..... 07
- GCS Graduate Colored Stones..... 08
- GP Graduate Pearls..... 09

## PROFESSIONAL DEVELOPMENT

- AJP Applied Jewelry Professional®..... 10

## JEWELRY MANUFACTURING ARTS

- GJ Graduate Jeweler..... 11
- JDT Jewelry Design & Technology..... 12
- CCC Comprehensive CAD/CAM for Jewelry... 13
- JD Jewelry Design..... 13

2018 and 2019 Global Class Schedules ..... 14

Supporting Student Success..... 18

### GIA (Gemological Institute of America®)

World Headquarters  
 The Robert Mouawad Campus  
 5345 Armada Drive  
 Carlsbad, CA 92008 USA  
 +1 800 421 7250 ext 4001  
 admissions@gia.edu

New York  
 Branch of Carlsbad Campus  
 50 W 47<sup>th</sup> Street, 8<sup>th</sup> Floor  
 New York, New York 10036 USA  
 +1 212 944 5900  
 nyadmissions@gia.edu

GIA.edu



*Padparadscha gem and crystal courtesy:  
 Bill Larson, Pala International*

GIA's campus in Carlsbad is accredited by the Accrediting Commission of Career Schools and Colleges (ACCSC). GIA's campus in New York is accredited by the ACCSC as a branch of GIA's campus in Carlsbad. ACCSC's accreditation is institutional in nature and includes GIA's U.S. On Campus education only. GIA's eLearning courses are accredited by the Distance Education Accrediting Commission (DEAC). GIA's lab classes do not fall within the purview of DEAC or ACCSC accreditation.



**GIA Carlsbad:** This institution is a private institution approved to operate by the California Bureau for Private Postsecondary Education. Approval to operate means the institution is compliant with the minimum standards contained in the California Private Postsecondary Education Act of 2009 (as amended) and Division 7.5 of Title 5 of the California Code of Regulations.

**GIA New York:** GIA's New York branch campus is licensed by the State of New York Bureau of Proprietary School Supervision.

For information about graduation rates, graduated students' median debt, gainful employment and other information, visit [GIA.edu/student-consumer-information](http://GIA.edu/student-consumer-information)

©2018 Gemological Institute of America. All rights reserved. No reproduction of logos or images is allowed without specific written request and approval by GIA.

GIA® and Gemological Institute of America® are registered trademarks of Gemological Institute of America, Inc.

# The Value of a GIA Education

The gem and jewelry industry offers countless opportunities that match your interests, including: gem analysis, sales, appraisal, quality assurance, manufacturing, jewelry design and field gemology. You might work for a large or small company, as a freelancer or start your own business.

Whatever path you choose to take in this vibrant and dynamic industry, a diploma or certificate from the Gemological Institute of America® gives you the knowledge and practical skills needed for a diverse range of rewarding and exciting careers. A GIA® credential is valued around the world and is one of the finest educations you can receive in gemology, jewelry design and jewelry manufacturing.

In the following pages, you will learn about GIA programs and courses. Here are some highlights that make GIA a leader in gem and jewelry education:

- Comprehensive curriculum on diamonds, colored gemstones, pearls, jewelry design and jewelry manufacturing
- Education programs created using GIA's industry-leading technology, field research and discoveries in the lab
- Learning environment with an emphasis on individualized attention and hands-on experience
- Flexible learning options: study full-time at a GIA campus or at your own pace via GIA Distance Education
- Wide range of education and career support options, including financial assistance and scholarship opportunities for those who qualify







# GIA On Campus Education

Come to a GIA® campus and step into the exciting world of gemology, jewelry design and jewelry manufacturing. Your time at GIA will be a transformative one. You'll immerse yourself in classwork that fires your imagination and can help prepare you for professional success. And you will create lifelong friends and a professional network that circles the globe.

## Campuses

- GIA Campuses span the globe: Carlsbad (GIA World Headquarters in California), New York, Bangkok, Hong Kong, London, Mumbai and Taiwan. Courses are also taught in Dubai, Surat and Tokyo.

## Instructors and Administrators

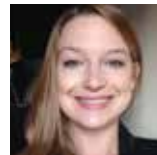
- GIA Instructors have an in-depth practical and theoretical knowledge of gemstones, diamonds, equipment and understanding of the jewelry industry.
- Our administrators and staff are dedicated to helping you succeed. Many are GIA alumni, so they understand what it is like to study full-time at a GIA campus.

## Programs and Courses

- Full-time programs and courses that run from 7 to 26 instructional weeks.
- Year-round start dates let you begin when it fits your schedule.
- On-campus study provides access to a full range of GIA programs and courses for gemology, jewelry design and jewelry manufacturing.
- Take lab classes to fulfill your Distance Education requirements, sharpen your skills, or as an introduction to a topic of interest.

## Classrooms

- Class sizes are small – typically 15 to 24 students – to maximize individual attention from instructors.
- Learn in modern classrooms using professional-grade software and equipment similar to what you will find on the job.



*"On my first visit to GIA, I was so impressed by the facilities and the people I met. It was really inspiring to be in that kind of setting. I knew I wanted to continue my studies there."*

**Niki Grandics, GIA GJ**  
Founder/Lead Designer, ENJI Design Studio

## An Experience Beyond the Classroom

- Study with like-minded students who are as passionate about gems and jewelry as you are.
- GIA has an international student body, which provides a global perspective on the gem and jewelry industry and creates a diverse, multicultural experience.
- Students can participate in organized activities related to their studies and social gatherings with their classmates.
- Hear from GIA researchers, industry leaders and alumni at guest lectures or special seminars.

Learn more about GIA campuses at  
[GIA.edu/gem-education/campuses](https://www.gia.edu/gem-education/campuses)



# GIA Distance Education

Study the same GIA® curriculum as full-time, on-campus students, but with greater flexibility to meet your family and job commitments. GIA Distance Education is a combination of eLearning courses and hands-on lab classes. It's a comprehensive gemology education that will expand your professional knowledge and can help advance your career.

## GIA Distance Education Diploma Programs

These programs are offered through GIA Distance Education:

- GIA Graduate Gemologist® (GG™) Diploma Program (page 6)
- GIA Graduate Diamonds Diploma Program (page 7)
- GIA Colored Stones Diploma Program (page 8)
- GIA Graduate Pearls Diploma Program (page 9)
- Applied Jewelry Professional (AJP®) Program – this program is available through GIA Professional Development by taking three eLearning courses (page 10)

## How You'll Learn

- Graphics, images and videos make eLearning modules media-rich and bring GIA's expertise to life.
- Study whenever and wherever you want, then submit assignments and take exams through our easy-to-use online eLearning platform.
- Lab classes offered at GIA schools worldwide include hands-on use of gemological equipment and actual gemstones.

## How to Get Started

- eLearning courses start every Monday, except certain holidays. Access your course 24 hours a day, seven days a week.
- Register and pay for each course separately.

- If you are registering for a lab class, check out the class schedule starting on page 14.
- Finish your course before the completion time (3 to 24 months depending on the course).

## Instructors

Distance Education students are assigned a primary instructor who is their main point of contact throughout their Distance Education coursework. During normal business hours, additional instructors are also available to provide assistance. Learn more about our instructors at [GIA.edu/distance-ed-faculty](http://GIA.edu/distance-ed-faculty)



*"I needed more flexibility to earn my GIA diploma. GIA Distance Education gave me the knowledge I needed to pursue my passion for gems and make it my second career."*

**Lonnie McCulloch, GIA GG**  
Owner, Intermountain Gemological Services

Start your professional gemology education now with GIA Distance Education. Learn more and apply online at [GIA.edu/distance-ed](http://GIA.edu/distance-ed)



# GRADUATE GEMOLOGIST®

GIA Graduate Gemologist graduates often choose these careers:

- Appraiser
- Auction House Jewelry Specialist
- Colored Stone Buyer
- Diamond Buyer
- Diamond Sorter/Grader
- Estate Jewelry Dealer
- Gemologist
- Inventory Control Specialist
- Jewelry Business Owner
- Jewelry Buyer
- Lab and Research Professional
- Merchandiser
- Pawnbroker
- Retailer
- Sales Associate
- Wholesaler

Contact Career Services for more information:  
[careerservices@gia.edu](mailto:careerservices@gia.edu)



## The Professional Credential That Opens Doors

The GIA Graduate Gemologist® (GG™) diploma program delivers a comprehensive gemology education on diamonds and colored stones. Using the latest gemological equipment, you will work with real diamonds and gemstones under the trained eyes of GIA instructors. Through extensive lab work, you will practice identifying and grading diamonds and colored stones in an efficient, accurate and consistent manner. Skills taught include evaluating a diamond's proportions; distinguishing natural, treated and synthetic gemstones; and using the GIA Colored Stone Grading System to determine gemstone quality. When studying on campus, you will receive tweezers, a 10x loupe, a pointer probe, plotting pens, a gem cloth, a table gauge, a crown angle card, a color grading card, a polariscope, a dichroscope, a handheld spectroscope, a pinpoint incandescent light source, a refractometer with polarizing filter and removable magnifying eyepiece, refractive index (RI) liquid, a lab manual and printed course materials.

### What You Will Learn:

- Develop in-depth, hands-on experience with the GIA International Diamond Grading System™ and the 4Cs (color, clarity, cut and carat weight)
- Grade diamonds in the D-to-Z color range
- Build a knowledge base about colored stones and the colored stone market
- Use gemological equipment effectively to identify gemstones
- Use the GIA Colored Stone Grading System to evaluate gemstone quality
- Identify gemstone characteristics, simulants and treatments, and recognize when advanced testing is required
- Understand how gems are mined, fashioned and brought to the marketplace
- Recognize how quality, rarity and color affect value
- Determine how market factors affect gem value

**What You Earn:** GIA Graduate Gemologist Diploma, GIA Graduate Diamonds Diploma, GIA Graduate Colored Stones Diploma

### On Campus

Full-time program offered at GIA campuses worldwide.  
 See *class schedule beginning on page 14*.

### Distance Education

A combination of eLearning courses offered through GIA in Carlsbad and instructor-led lab classes offered at GIA campuses and other locations worldwide (see *GIA Education Catalog* or [GIA.edu](http://GIA.edu) for details).

#### Five eLearning courses


- Diamond Essentials
- Diamonds & Diamond Grading
- Colored Stone Essentials
- Colored Stones
- Gem Identification

#### Three lab classes

- Diamond Grading lab – 5 days (or 10 nights when applicable)
- Colored Stone Grading lab – 3 days (or 6 nights when applicable)
- Gem Identification lab – 5 days (or 10 nights when applicable)

See *class schedule beginning on page 14*.

For eLearning and lab class descriptions, visit [GIA.edu/distance-ed](http://GIA.edu/distance-ed)

 Learn more at [GIA.edu/GG](http://GIA.edu/GG)



# GRADUATE DIAMONDS

GIA Graduate Diamonds graduates often choose these careers:

- Auction House Jewelry Specialist
- Diamond Buyer
- Diamond Sorter/Grader
- Jewelry Business Owner
- Retailer
- Wholesaler

Contact Career Services for more information:  
[careerservices@gia.edu](mailto:careerservices@gia.edu)



## The Tremendous, Treasured and Timeless Diamond

The Graduate Diamonds diploma program examines the technical expertise needed to grade, buy and sell diamonds with the insight of a seasoned professional. This diploma program explores the GIA® diamond grading procedures to assess the 4Cs – color, clarity, cut and carat weight – and how they affect diamond value. Students use professional diamond grading equipment for the purposes of examining a diamond’s quality characteristics to grade and identify diamonds. Coursework also includes creating plotting diagrams; determining fluorescence; and detecting treated diamonds, synthetic diamonds and diamond simulants. Other topics covered include the effect of fluorescence on diamond body color, the role cut plays in the marketplace, and important sectors of the diamond industry, including dealers, cutters and manufacturers. When studying on campus, you will receive tweezers, a 10x loupe, a pointer probe, plotting pens, a gem cloth, a table gauge, a crown angle card, a color grading card, a lab manual and printed course materials.

### What You Will Learn:

- Develop in-depth, hands-on experience with the GIA International Diamond Grading System™ and the 4Cs (color, clarity, cut and carat weight); appreciate how they affect diamond value
- Grade diamonds in the D-to-Z color range
- Detect diamond synthetics, treatments and simulants
- Recognize when advanced testing is required

### What You Earn: GIA Graduate Diamonds Diploma

#### On Campus

Full-time program offered at GIA campuses worldwide.  
 See class schedule beginning on page 14.

#### Distance Education

A combination of eLearning courses offered through GIA in Carlsbad and instructor-led lab classes offered at GIA campuses and other locations worldwide (see *GIA Education Catalog* or [GIA.edu](http://GIA.edu) for details).

#### Two eLearning courses

- Diamond Essentials
- Diamonds & Diamond Grading

#### One lab class

- Diamond Grading lab – 5 days (or 10 nights when applicable)

See class schedule beginning on page 14.

For eLearning and lab class descriptions, visit [GIA.edu/distance-ed](http://GIA.edu/distance-ed)





# GCS GRADUATE COLORED STONES

GIA Graduate Colored Stones graduates often choose these careers:

- Appraiser
- Auction House Jewelry Specialist
- Colored Stone Buyer
- Estate Jewelry Dealer
- Jewelry Business Owner
- Jewelry Buyer
- Pawnbroker
- Retailer
- Wholesaler

Contact Career Services for more information:  
careerservices@gia.edu



## Countless Colors, Limitless Possibilities

The Graduate Colored Stones diploma program explores the identification of common and unusual gemstones found in the marketplace. Subjects covered include the GIA Colored Stone Grading System and the correct usage of standard gemological equipment to distinguish natural, treated and synthetic gemstones. The program also examines which gems are commercially important, shifting supply patterns and how these factors affect gem prices and availability. This program also includes the study of more than 60 species of gemstones, and how illumination techniques can facilitate the identification process. When studying on campus, you will keep a polariscope, a dichroscope, a handheld spectroscope, a refractometer with polarizing filter and removable magnifying eyepiece, refractive index (RI) liquid, tweezers, a pinpoint incandescent light source, lab manual and printed course materials.

### What You Will Learn:

- Build a knowledge base about colored stones and the colored stone market
- Use gemological equipment effectively to identify gemstones
- Use the GIA Colored Stone Grading System to evaluate gemstone quality
- Recognize how quality, rarity and color affect value
- Determine how market factors affect gem value
- Understand how gems are mined, fashioned and brought to the marketplace

**What You Earn:** GIA Graduate Colored Stones Diploma

### On Campus

Full-time program offered at GIA® campuses worldwide.

See class schedule beginning on page 14.

### Distance Education

A combination of eLearning courses offered through GIA in Carlsbad and instructor-led lab classes offered at GIA campuses and other locations worldwide (see *GIA Education Catalog* or GIA.edu for details).

#### Three eLearning courses

- Colored Stone Essentials
- Colored Stones
- Gem Identification

#### Two lab classes


- Colored Stone Grading lab – 3 days (or 6 nights when applicable)
- Gem Identification lab – 5 days (or 10 nights when applicable)

See class schedule beginning on page 14.

For eLearning and lab class descriptions, visit [GIA.edu/distance-ed](http://GIA.edu/distance-ed)



Opal courtesy: Cenki Thomas

 Learn more at [GIA.edu/GCS](http://GIA.edu/GCS)





# GRADUATE PEARLS

GIA Graduate Pearls graduates often choose these careers:

- Jewelry Business Owner
- Pearl Buyer
- Pearl Sorter/Grader
- Retailer
- Wholesaler

Contact Career Services for more information:  
[careerservices@gia.edu](mailto:careerservices@gia.edu)



## Timely Knowledge for Timeless Treasures

The Graduate Pearls diploma program provides the product knowledge and grading skills to buy inventory and effectively build confidence when buying and selling akoya, South Sea, Tahitian and freshwater pearls. You will be taught GIA's 7 Pearl Value Factors™: size, shape, color, luster, surface quality, nacre quality and matching – the essential criteria for assessing the value and beauty of pearls. Topics covered include post-harvest treatments, imitation pearls and pearl testing. Students will get hands-on training and practice testing pearls for authenticity and post-harvest treatments. Each student will receive a lab manual.

### What You Will Learn:

- Explain the differences between natural and cultured pearls
- Evaluate and grade cultured pearls based on GIA's 7 Pearl Value Factors
- Describe the components of the GIA Pearl Report
- Describe cultured pearl types and their sources
- Identify "other" pearl types found in the marketplace
- Describe common pearl treatments
- Understand the relationship of beauty, value and quality
- Learn the process of pearl culturing and marketing

### What You Earn: GIA Graduate Pearls Diploma

#### Distance Education

A combination of one eLearning course offered through GIA® in Carlsbad and one instructor-led lab class offered at GIA campuses and other locations worldwide (see *GIA Education Catalog* or [GIA.edu](http://GIA.edu) for details).

#### One eLearning course

- Pearls

#### One lab class

- Pearl Grading lab – 1 day (or 2 nights when applicable)

See class schedule beginning on page 14.

For eLearning and lab class descriptions, visit [GIA.edu/distance-ed](http://GIA.edu/distance-ed)



Tahitian pearl necklace



# APPLIED JEWELRY PROFESSIONAL®

## PROFESSIONAL DEVELOPMENT

The GIA Applied Jewelry Professional program provides fundamental education for professionals in careers like these:

Jewelry Assistant Manager  
Jewelry Sales Professional  
Television Shopping Host  
Pawnbroker

Contact Career Services  
for more information:  
[careerservices@gia.edu](mailto:careerservices@gia.edu)



## The Front Line of the Jewelry Industry

The Applied Jewelry Professional® (AJP®) program covers topics including jewelry designs, setting styles, jewelry care and other content that will support the product knowledge of current industry professionals. The AJP program also introduces basic information about diamonds, rubies, emeralds, sapphires and the GIA® clarity grading system. Other subjects of study include how modern technology is changing the way diamonds are cut, the qualities of precious metals, major jewelry manufacturing methods and the important activities involved in the operation of a retail jewelry store. To enable effective product conversations, examples are provided on how to translate jewelry features into benefits and how to communicate the 4Cs of diamond value to customers. The AJP program provides clear and concise information that can be immediately implemented on the job.

### What You Will Learn:

- Describe how the 4Cs (color, clarity, cut and carat weight) affect a diamond's value
- Recognize the relationship between size and weight of diamonds
- Explain the differences between treated, synthetic and imitation stones to sell with full disclosure
- Understand the steps of the jewelry sales process
- Translate jewelry design, style and manufacturing features into benefits
- Convey the romance, lore and characteristics of the most popular colored gemstones

**What You Earn:** GIA Applied Jewelry Professional credential

## eLearning

Courses offered through GIA in Carlsbad (see *GIA Education Catalog* or [GIA.edu](http://GIA.edu) for details).

### Three eLearning courses

- Jewelry Essentials
- Colored Stone Essentials
- Diamond Essentials

For eLearning and lab class descriptions, visit [GIA.edu/distance-ed](http://GIA.edu/distance-ed)



Learn more at [GIA.edu/AJP](http://GIA.edu/AJP)



Elbaite variety rubellite and diamond earrings courtesy: Marco Marchese



# GRADUATE JEWELER

GIA Graduate Jewelers often choose these careers:

Bench Jeweler  
Business Owner  
Custom Order Jeweler  
Jewelry Buyer  
Jewelry Repair Technician  
Manufacturing Executive  
Quality Assurance Specialist  
Stone Setter

Contact Career Services for more information:  
[careerservices@gia.edu](mailto:careerservices@gia.edu)



## Create Jewelry With a Confident Hand and Expert Eye

The Graduate Jeweler diploma program offers a hands-on learning experience in a professional environment that will prepare you for a career as a bench jeweler. The course covers skills valuable for jewelry designers, Computer-Aided Design (CAD) modelers, and sales professionals. You will make and repair jewelry in a safe and sustainable manner within a clean, modern, well-equipped classroom that includes a laser welder. At your own workbench – equipped with a torch, micromotor and essential toolkit – you will develop core skills with progressively challenging projects. You will work with gemstones and precious metals, taking projects from castings to finished, set and polished pieces. You will keep your hand tools and digital course content, which includes technical illustrations, instructional videos and a bench reference guide.

### What You Will Learn:

- Use laser-welding technology for gold, silver and platinum
- Develop essential skills, including polishing, filing, texturing, sawing, fabrication and forging techniques, stone setting and general torch skills
- Set a variety of stone shapes, including princess-cut stones, in mounting styles such as channel setting, bezel setting, and prong setting, in base metals, silver, white gold, yellow gold and platinum
- Perform the most common jewelry repairs, including sizing rings, replacing prongs, repairing broken chains and installing new settings
- Apply both textured and polished finishes to jewelry surfaces on a variety of metals
- Evaluate and improve workmanship using GIA Quality Assurance Benchmarks™

**What You Earn:** GIA Graduate Jeweler Diploma

### On Campus

Full-time class offered at GIA's campus in Carlsbad.

See class schedule beginning on page 14.



See GIA® Graduate Jeweler students tackle the "Halo ring" project in 14K gold at [GIA.edu/gjvideo](http://GIA.edu/gjvideo)



Learn more at [GIA.edu/GJ](http://GIA.edu/GJ)

*Halo Ring project example, GIA Graduate Jeweler. This project features an oval center stone in a six-prong setting surrounded by round, precision-cut stones in a halo setting with common prongs. This project is completed in sterling silver and two-tone white and yellow 14k gold.*



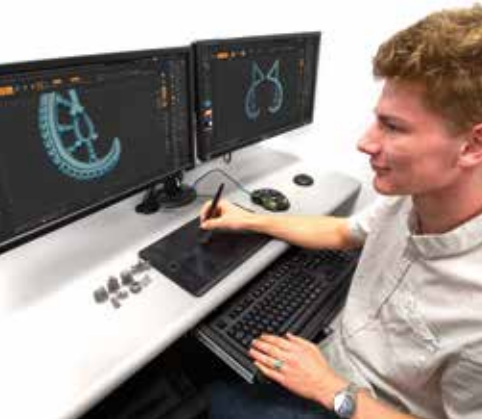


# JEWELRY DESIGN & TECHNOLOGY

GIA Jewelry Design & Technology graduates often choose these careers:

- CAD/CAM Service Bureau Technician
- CAD Designer
- CAM Operator
- Jewelry Designer
- Product Developer
- Quality Assurance Specialist

Contact Career Services for more information: [careerservices@gia.edu](mailto:careerservices@gia.edu)



## Skills From Concept to Counter

The Jewelry Design & Technology diploma program covers topics essential to becoming a jewelry designer and Computer-Aided Design (CAD) technician, including being able to build a CAD model of jewelry to engineering specifications and understanding the challenges that come with its manufacturing. Instructors teach design elements and principles and concept sketching to create attractive jewelry designs to present to a client prior to building the CAD model. Other topics covered include important jewelry design eras, understanding and applying motifs to jewelry, and jewelry manufacturing methods. You will be provided with a limited student license for Matrix, Rhinoceros and ZBrush software, an external hard drive, a 10x loupe and hand-measuring tools for you to keep.

### What You Will Learn:

- Use fundamental design concepts, including texture, shape, form, balance, negative space and color
- Apply the CAD model engineering concepts to make durable and comfortable pieces that are long lasting
- Create, render and prototype designs using CAD software like Matrix, Rhinoceros, ZBrush and V-Ray; and operate Computer-Aided Manufacturing (CAM) hardware like a 3D printer
- Understand manufacturing processes for the creation of jewelry, like die-striking and casting
- Design and develop CAD models using the metrics of scale, proportion, and element relationships; and within the constraints of cost, time, size, style and manufacturing methods
- Apply GIA Quality Assurance Benchmarks™ to jewelry designs to ensure proper engineering for manufacturing and wear
- Develop digital and physical portfolios of class projects and custom designs that are ready for presentation to potential clients and employers, and display work in a final design exhibition

**What You Earn:** GIA Jewelry Design & Technology Diploma

### On Campus

Full-time program offered at GIA® campuses in Carlsbad and New York.

See class schedule beginning on page 14.



See GIA Jewelry Design & Technology students showcase their portfolios at the final design exhibition at [GIA.edu/jdtvideo](http://GIA.edu/jdtvideo)



Learn more at [GIA.edu/JDT](http://GIA.edu/JDT)

Pendant design and CAD rendering by Jieqing Ding, JDT graduate







# CCC COMPREHENSIVE CAD/CAM FOR JEWELRY

## The Driving Force in Jewelry Design and Manufacturing Technology

This comprehensive seven-week course covers the skills necessary to become a CAD/CAM (Computer-Aided Design/Computer-Aided Manufacturing) technician. Skills taught include using CAD software (Matrix and Rhinoceros) to develop models and V-Ray software for photorealistic renderings. Topics covered also include subtractive and additive CAM machines, jewelry manufacturing techniques, GIA Quality Assurance Benchmarks and jewelry-engineering fundamentals.

### What You Will Learn:

- Create CAD models within the metrics of scale, proportion and element relationships
- Develop CAD models within the constraints of cost, time, size, style and manufacturing methods
- Distinguish between various CAD software, including Matrix and Rhinoceros; and various CAM methods, including 3D printing
- Model and render manufacturable pieces of jewelry using CAD

**What You Earn:** GIA Comprehensive CAD/CAM for Jewelry Certificate

Full-time course offered at GIA® campuses in Carlsbad, New York and London.

See class schedule beginning on page 14.

# JD JEWELRY DESIGN

## Illustrate Your Way to a Promising Future

In this intensive nine-week course, instructors teach creative and technical hand-rendering skills needed to begin a career as a custom jewelry designer. Jewelry design theory helps students acquire a working knowledge of jewelry artistry. Skills covered include illustrating the shape, form and texture of metal; working with drafting tools; and rendering yellow and white metals, as well as a range of faceted and cabochon gemstones and pearls. Instructors show how to illustrate rings in five different views and how to keep design ideas flowing. At the completion of this course, you will have a hand-developed portfolio of your work and a digital copy to show prospective employers and clients. You will be able to keep your design toolkit, which contains a variety of paints, pencils, brushes, templates, papers and vellum, and other art tools.

### What You Will Learn:

- Develop sources of inspiration
- Understand jewelry design theory and artistry
- Illustrate shape, form and texture of metal
- Render faceted gems, pearls, colored metals, etc.
- Learn traditional drafting techniques
- Develop motifs to create sketches of jewelry objects
- Create a portfolio of class projects and custom designs that is ready for presentation to potential clients and employers

**What You Earn:** GIA Jewelry Design Certificate

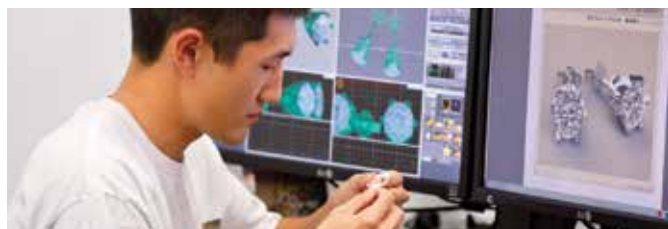
Full-time course offered at GIA campuses worldwide.

See class schedule beginning on page 14.

### GIA Comprehensive CAD/CAM for Jewelry graduates often choose these careers:

- CAD Service Bureau Technician
- Jewelry CAD Technician
- Product Developer

Contact Career Services for more information: [careerservices@gia.edu](mailto:careerservices@gia.edu)



### GIA Jewelry Design graduates often choose these careers:

- Custom Designer
- Hand Renderer
- Jewelry Business Owner
- Jewelry Designer
- Sales Associate

Contact Career Services for more information: [careerservices@gia.edu](mailto:careerservices@gia.edu)



Learn more at [GIA.edu/CCC](http://GIA.edu/CCC)

Learn more at [GIA.edu/JD](http://GIA.edu/JD)

# 2018 and 2019 Global Class Schedules

## ON-CAMPUS PROGRAMS

Please refer to GIA.edu for the most up-to-date schedules, tuition and fees.

Unless otherwise noted, all classes are held at GIA® facilities at the address shown on the back cover of the most current version of the *GIA Education Catalog* or campus handbook for your campus of interest.

GIA reserves the right to reschedule or cancel classes.

## CARLSBAD, CA

### GEMOLOGY

#### GEM 2500 Graduate Gemologist®

##### 2018

Oct 11, 2018-May 24, 2019

##### 2019

Jan 17-Aug 2  
Feb 14-Aug 30  
Apr 4-Oct 18  
May 30-Dec 20  
Aug 8, 2019-Mar 13, 2020  
Sep 5, 2019-Apr 10, 2020  
Oct 17, 2019-May 22, 2020

#### GEM 2200 Graduate Diamonds

##### 2018

Oct 11-Dec 14\*

##### 2019

Jan 17-Mar 15\*  
Feb 14-Apr 12\*  
Apr 4-May 31\*  
May 30-Jul 26\*  
Aug 8-Oct 4\*  
Sep 5-Nov 1\*  
Oct 17-Dec 20\*

#### GEM 2300 Graduate Colored Stones

##### 2018

Nov 5, 2018-Apr 19, 2019\*

##### 2019

Jan 7-May 24\*  
Mar 18-Aug 2\*  
Apr 15-Aug 30\*  
Jun 3-Oct 18\*  
Jul 29-Dec 20\*  
Oct 7, 2019-Mar 13, 2020\*  
Nov 4, 2019-Apr 10, 2020\*  
Jan 6, 2019-May 22, 2020\*

### JEWELRY MANUFACTURING ARTS

#### JMA 3400 Jewelry Design & Technology

##### 2019

Jan 17-Jul 26  
Apr 25-Nov 1  
Sept 19, 2019-Apr 17, 2020

#### JMA 3300 Graduate Jeweler

##### 2019

Jan 24-Aug 2  
May 30-Dec 13  
Sep 5, 2019-Apr 3, 2020

#### JMA 370 Jewelry Design

##### 2019

Jan 10-Mar 15  
Jul 5-Sep 6

#### JMA 400 Comprehensive CAD/CAM for Jewelry

##### 2019

Apr 4-May 24  
Oct 3-Nov 22

## NEW YORK, NY

### GEMOLOGY

#### GEM 2500 Graduate Gemologist®

##### 2018

Oct 11, 2018-May 24, 2019

##### 2019

Jan 10-Jul 26  
Mar 7-Sep 20  
May 2-Nov 15  
May 30-Dec 20  
Jun 27, 2019-Jan 31, 2020  
Aug 22, 2019-Mar 27, 2020  
Oct 17, 2019-May 22, 2020

#### GEM 2200 Graduate Diamonds

##### 2018

Oct 11-Dec 14\*

##### 2019

Jan 10-Mar 8\*  
Jan 31-Mar 29  
Mar 7-May 3\*  
Apr 4-May 31  
May 2-Jun 28\*  
May 30-Jul 26\*  
Jun 27-Aug 23\*  
Jul 25-Sep 20  
Aug 22-Oct 18\*  
Sep 26-Nov 22  
Oct 17-Dec 20\*

#### GEM 2300 Graduate Colored Stones

##### 2018

Oct 15, 2018-Mar 29, 2019\*

##### 2019

Jan 7-May 24\*  
Mar 11-Jul 26\*  
May 6-Sep 20\*  
Jul 1-Nov 15\*  
Jul 29-Dec 20\*  
Aug 26, 2019-Jan 31, 2020\*  
Oct 21, 2019-Mar 27, 2020\*  
Jan 6, 2020-May 22, 2020\*

### JEWELRY MANUFACTURING ARTS

#### JMA 3400 Jewelry Design & Technology

##### 2019

Jun 6-Dec 20

#### JMA 370 Jewelry Design

##### 2019

May 9-Jul 12  
Oct 3-Dec 13

#### JMA 400 Comprehensive CAD/CAM for Jewelry

##### 2019

Aug 1-Sep 20

## LAB CLASSES

## CARLSBAD, CA

### GEMOLOGY

#### GEM 220L Colored Stone Grading

##### 2018

Nov 5-7

##### 2019

Jan 21-23  
Mar 18-20  
May 6-8  
Jul 22-24  
Sep 23-25  
Nov 4-6

#### GEM 230L Diamond Grading

##### 2018

Oct 22-26  
Nov 12-16

##### 2019

Jan 7-11  
Jan 28-Feb 1  
Mar 4-8  
Apr 22-26  
Jul 8-12  
Jul 29-Aug 2  
Sep 9-13  
Sep 30-Oct 4  
Oct 21-25  
Nov 11-15

#### GEM 240L Gem Identification

##### 2018

Oct 29-Nov 2

##### 2019

Jan 14-18  
Mar 11-15  
Apr 29-May 3  
Jul 15-19  
Sep 16-20  
Oct 28-Nov 1

#### GEM 149L Pearl Grading

##### 2018

Nov 8

##### 2019

Jan 24  
Mar 21  
May 9  
Jul 25  
Sep 26  
Nov 7

### JEWELRY MANUFACTURING ARTS

#### JMA 320L Basic Repair and Setting

##### 2019

Apr 22-26  
Aug 12-16

#### JMA 340L Intermediate Repair and Setting

##### 2019

Apr 29-May 3  
Aug 19-23

## NEW YORK, NY

### GEMOLOGY

#### GEM 220L Colored Stone Grading

##### 2018

Oct 1-3  
Oct 13-27 (S)  
Oct 29-Nov 6 (N)  
Dec 10-12

##### 2019

Mar 4-6  
Apr 1-3  
Apr 22-24  
May 13-15  
Jun 10-12  
Jun 10-18 (N)  
Jul 15-17  
Aug 19-21  
Oct 12-26 (S)  
Oct 28-Nov 5 (N)  
Dec 16-18

#### GEM 230L Diamond Grading

##### 2018

Nov 5-9  
Nov 26-30

##### 2019

Feb 11-15  
Mar 4-19 (N)  
Mar 18-22  
Mar 30-Apr 27 (S)  
Apr 8-12  
Apr 29-May 3  
Jun 3-7  
Jul 8-12  
Aug 5-9  
Aug 5-20 (N)  
Sep 30-Oct 4  
Dec 2-6

#### GEM 240L Gem Identification

##### 2018

Dec 3-7

##### 2019

Feb 25-Mar 1  
Mar 25-29  
Apr 15-19  
Apr 29-May 14 (N)  
May 6-10  
Jun 17-21  
Jul 13-Aug 10 (S)  
Aug 12-16  
Sep 23-Oct 8 (N)  
Oct 7-Oct 11  
Dec 9-13

#### GEM 149L Pearl Grading

##### 2018

Oct 4  
Dec 13

##### 2019

Mar 7  
Apr 4  
Apr 25  
May 16  
Jun 13  
Jul 18  
Aug 22  
Dec 19

### CLASS DURATION AND HOURS

#### Monday–Friday Day Classes

Schedules may vary depending on holidays, breaks or other events. For more details:  
**Carlsbad:** [GIA.edu/carlsbad-class-duration-hours](http://GIA.edu/carlsbad-class-duration-hours) or contact [admissions@gia.edu](mailto:admissions@gia.edu)  
**New York:** [GIA.edu/new-york-class-duration-hours](http://GIA.edu/new-york-class-duration-hours) or contact [nyadmissions@gia.edu](mailto:nyadmissions@gia.edu)

#### Night and Weekend Classes

##### New York:

Monday–Thursday:  
On campus: 6:00 p.m. – 9:30 p.m.

Saturday: 8:00 a.m. – 4:00 p.m.

# 2018 and 2019 Global Class Schedules

## U.S. SEMINARS

### LAS VEGAS, NV

To register, and for class location, call American Gem Society at +1 866 805 6500, option 4 or email AGSEducation@ags.org

**2019 dates and topics to be announced.**

#### GEMOLOGY

##### GEM 220L Colored Stone Grading

**2018**  
Oct 10-12

##### GEM 230L Diamond Grading

**2018**  
Oct 15-19

### LAS VEGAS, NV

Seminars offered during JCK show.

**2019 dates and topics to be announced.**

### TUCSON, AZ

Classes are held at the Tucson Convention Center, 260 South Church, Tucson, AZ 86701.

Seminars offered during AGTA show

**2019 dates and topics to be announced.**

## ON-CAMPUS PROGRAMS

### BANGKOK GIAthai.net

#### GEMOLOGY

##### GEM 2500 Graduate Gemologist®

**2018**  
Oct 25-May 31, 2019

**2019**  
May 30-Dec 13

##### GEM 2200 Graduate Diamonds

**2018**  
Oct 25-Dec 21

**2019**  
Jan 31-Mar 29  
May 30-Jul 26\*  
Oct 24-Dec 20

##### GEM 2300 Graduate Colored Stones

**2019**  
Jan 10-May 31\*  
Jul 25-Dec 13\*

#### JEWELRY MANUFACTURING ARTS

##### JMA 370 Jewelry Design

**2019**  
Feb 7-Apr 12  
July 11-Sep 13

### NEW DELHI GIAIndia.in

#### GEMOLOGY

##### GEM 2500 Graduate Gemologist®

**2019**  
Mar 21-Oct 4

##### GEM 2200 Graduate Diamonds

**2019**  
Jan 10-Mar 8  
Mar 21-May 17\*  
Nov 7, 2019-Jan 3, 2020

##### GEM2300 Graduate Colored Stone

**2019**  
May 16-Oct 4\*

### DUBAI GIAmideast.com

#### GEMOLOGY

##### GEM 2200 Graduate Diamonds

**2018**  
Nov 1-Dec 27

**2019**  
Jan 17-Mar 14  
Jun 27-Aug 22  
Aug 22-Oct 17  
Oct 31-Dec 26

### HONG KONG GIA.edu

#### GEMOLOGY

##### GEM 2500 Graduate Gemologist®

**2019**  
May 23-Dec 20  
Oct 17-Jun 12, 2020

##### GEM 2200 Graduate Diamonds

**2018**  
Oct 22-Dec 18 (Cantonese) (N) M, Tu, Th (H)  
Oct 25-Dec 21

**2019**  
Jan 3-Mar 19 (Cantonese) (N) M, Tu, Th (H)  
Jan 3-Mar 8  
Mar 7-May 16 (Cantonese) (N) M, Tu, Th (H)  
May 6-Jul 9 (Cantonese) (N) M, Tu, Th (H)  
May 17-Aug 23 (Cantonese) M, F (H)  
May 21-Aug 20 (Cantonese) T, Th (H)  
May 23-Jul 19\*  
Jul 2-Aug 29 (N) M, Tu, Th (H)  
Aug 5-Oct 17 (Cantonese) (N) M, Tu, Th (H)  
Oct 8-Dec 5 (Cantonese) (N) M, Tu, Th (H)  
Oct 17-Dec 13\*

##### GEM 2300 Graduate Colored Stones

**2018**  
Jul 26-Dec 21

**2019**  
Jan 3-Jun 27 (Cantonese) (N) M, Tu, Th (H)  
Jan 10-Jun 21  
Jul 4-Dec 12 (Cantonese) (N) M, Tu, Th (H)  
Jul 18-Dec 20\*  
Jan 2, 2020-Jun 12, 2020\*

#### JEWELRY MANUFACTURING ARTS

##### JMA 370 Jewelry Design

**2019**  
Mar 7-May 17  
Jul 25-Oct 4 (Cantonese)

### LONDON London.GIA.edu

#### GEMOLOGY

##### GEM 2500 Graduate Gemologist®

**2018**  
Oct 18, 2018-May 24, 2019

**2019**  
Jan 31-Aug 16  
Mar 14-Sep 27  
Jun 6-Dec 20  
Sep 26-Apr 24, 2020  
Oct 24-May 22, 2020

##### GEM 2200 Graduate Diamonds

**2018**  
Oct 18-Dec 14\*

**2019**  
Jan 31-Mar 29\*  
Mar 14-May 10\*  
Jun 6-Aug 2\*  
Sep 26-Nov 22\*  
Oct 24-Dec 20\*

##### GEM 2300 Graduate Colored Stones

**2018**  
Nov 1-Apr 12, 2019\*

**2019**  
Jan 3-May 24\*  
Mar 28-Aug 16\*  
May 9-Sep 27  
Aug 1-Dec 20\*  
Nov 21-Apr 24, 2020\*  
Dec 19-May 22, 2020\*

#### JEWELRY MANUFACTURING ARTS

##### JMA 370 Jewelry Design

**2018**  
Oct 11-Dec 14

**2019**  
Jan 10-Mar 15  
Mar 28-May 31  
Aug 15-Oct 18

##### JMA 400 Comprehensive CAD/CAM for Jewelry

**2019**  
Jun 13-Aug 2  
Oct 31-Dec 20

(N) = Nighttime; (S) = Saturday; (H) = Course includes both on-campus and self-paced study.

**Class Duration:** Please note class schedules may vary depending on holidays and breaks; please review the schedule carefully and plan accordingly.

\* Dates offered on a standby basis. Call for availability. You will be placed on a wait list until 30 days prior to the start of your program or class when GIA can confirm your space availability. Schedules are subject to change without notice. For the latest schedules, see campus schedules at GIA.edu. Contact the campus to confirm availability and for additional information and details.

# 2018 and 2019 Global Class Schedules

## ON CAMPUS PROGRAMS (cont.)

### MUMBAI GIAIndia.in

#### GEMOLOGY

##### GEM 2500 Graduate Gemologist®

###### 2019

Jan 3-Jul 19  
Feb 14-Aug 30  
May 30-Dec 20  
Jul 25, 2019-Feb 14, 2020

##### GEM 2200 Graduate Diamonds

###### 2018

Nov 8-Jan 4, 2019  
Nov 29-Jan 25, 2019

###### 2019

Jan 3-Mar 1\*  
Jan 24-Mar 22  
Feb 14-Apr 12\*  
Feb 21-Apr 19  
Mar 28-May 24  
Apr 25-Jun 21  
May 30-Jul 26\*  
Jun 20-Aug 16  
Jul 25-Sep 20\*  
Aug 22-Oct 18  
Aug 29-Oct 25  
Nov 7, 2019-Jan 3, 2020  
Dec 5, 2019-Jan 31, 2020

##### GEM 2300 Graduate Colored Stones

###### 2018

Sep 20-Feb 15, 2019\*

###### 2019

Feb 28-Jul 19  
Apr 11-Aug 30  
Jul 25-Dec 20  
Sep 19, 2019-Feb 14, 2020

#### JEWELRY MANUFACTURING ARTS

##### JMA 370 Jewelry Design

###### 2018

Nov 15, 2018-Jan 18, 2019

###### 2019

Feb 7-Apr 12  
Apr 18-Jun 21  
Sep 19-Nov 29  
Dec 5, 2019-Feb 7, 2020

### SHANGHAI GIAtaiwan.com.tw

#### GEMOLOGY

##### GEM 2500 Graduate Gemologist®

###### 2019

Feb 22-Sep 6 (Chinese)  
Jun 28-Jan 17, 2020 (Chinese)

##### GEM 2200 Graduate Diamonds

###### 2019

Feb 22-Apr 19\* (Chinese)  
Mar 9-May 25 (Chinese) (S)  
Jun 28-Aug 23\* (Chinese)  
Jun 15-Aug 31 (Chinese) (S)  
Sep 6-Nov 8 (Chinese)

##### GEM 2300 Graduate Colored Stones

###### 2019

Apr 19-Sep 6\* (Chinese)  
Jun 1-Jan 11, 2020 (Chinese) (S) (H)  
Aug 23-Jan 17, 2020\* (Chinese)

#### JEWELRY MANUFACTURING ARTS

##### JMA 370 Jewelry Design

###### 2019

Feb 22-Apr 26  
Nov 8, 2019-Jan 10, 2020

### SURAT GIAIndia.in

#### GEMOLOGY

##### GEM 2200 Graduate Diamonds

###### 2018

Nov 15, 2018-Jan 11, 2019

###### 2019

Feb 7-Apr 5  
May 16-Jul 12  
Aug 16-Oct 11

### TAIPEI GIAtaiwan.com.tw

#### GEMOLOGY

##### GEM 2500 Graduate Gemologist®

###### 2018

Nov 2, 2018-Jun 7, 2019 (Chinese)

###### 2019

May 22-Oct 4 (Chinese)  
Jul 5, 2019-Jan 17, 2020 (Chinese)  
Nov 1, 2019-Jun 5, 2020 (Chinese)

##### GEM 2200 Graduate Diamonds

###### 2018

Oct 27, 2018-Jan 5, 2019 (Chinese) (S)  
Nov 2-Dec 28 (Chinese)

###### 2019

Mar 15-May 13 (Chinese) (N) M, W, F  
Mar 22-May 17\* (Chinese)  
May 25-Aug 10 (Chinese) (S)  
Jul 5-Aug 30\* (Chinese)  
Aug 9-Oct 7 (Chinese) (N) M, W, F  
Oct 12-Dec 28 (Chinese) (S)  
Nov 1-Dec 27\* (Chinese)

##### GEM 2300 Graduate Colored Stones

###### 2019

Jan 4-Jun 6\* (Chinese)  
May 17-Oct 4\* (Chinese)  
Aug 30, 2019-Jan 17, 2020\* (Chinese)

#### JEWELRY MANUFACTURING ARTS

##### JMA 370 Jewelry Design

###### 2019

May 3-Jul 5 (Chinese)  
Aug 30-Nov 1 (Chinese)

## LAB CLASSES AND PROFESSIONAL DEVELOPMENT

### BANGKOK GIAthai.net

#### GEMOLOGY

##### GEM 220L Colored Stone Grading

###### 2019

Jan 21-23  
Jul 1-3  
Oct 15-17

##### GEM 230L Diamond Grading

###### 2019

Jan 7-11  
Jun 17-21  
Sep 30-Oct 4

##### GEM 240L Gem Identification

###### 2019

Jan 14-18  
Jun 24-28  
Oct 7-11

##### GEM 149L Pearl Grading

###### 2019

Jan 24  
Jul 4  
Oct 18

#### PROFESSIONAL DEVELOPMENT

##### Applied Jewelry Professional® (Intensive)

###### 2019

Jan 28-Feb 1  
May 13-17  
Nov 4-8

### BIRMINGHAM London.GIA.edu

#### GEMOLOGY

##### GEM220L Colored Stone Grading

###### 2019

Jan 28-30  
May 28-30  
Sep 2-4  
Nov 4-6

##### GEM 230L Diamond Grading

###### 2019

Jan 14-18  
Jan 21-25  
May 20-24  
Jun 3-7  
Sep 9-13  
Sep 16-20  
Oct 21-25  
Oct 28-Nov 1

##### GEM 149L Pearl Grading

###### 2019

Jan 31  
May 31  
Sep 5  
Nov 7

### NEW DELHI GIAIndia.in

#### GEMOLOGY

##### GEM220L Colored Stone Grading

###### 2018

Nov 26-28

###### 2019

Oct 21-23

##### GEM230L Diamond Grading

###### 2018

Nov 19-23  
Dec 17-21

###### 2019

Jan 7-11  
Mar 11-15  
Oct 7-11  
Nov 4-8

#### PROFESSIONAL DEVELOPMENT

##### Applied Jewelry Professional® (Intensive)

###### 2019

Mar 18-22  
Oct 14-18

##### SWIFT Jewellery Design

###### 2019

Jun 24-28  
Sep 2-6

#### STUDENT WORKROOM

GIA Student Workrooms give you access to all the equipment and gemstones you need to complete the practical requirements of your Gem Identification course through eLearning.

Please contact the campus directly to schedule a workroom.

For information and availability of student workrooms please visit [GIA.edu/gem-education/student-workroom](http://GIA.edu/gem-education/student-workroom)

Burma sapphire rough and oval cut, courtesy: Pioneer Gems.





# 2018 and 2019 Global Class Schedules

## LAB CLASSES AND PROFESSIONAL DEVELOPMENT (cont.)

### DUBAI GIAmidEast.com

#### GEMOLOGY

##### GEM220L Colored Stone Grading

###### 2018

Nov 4-6

###### 2019

Apr 7-9  
Jun 9-11  
Oct 27-29

##### GEM230L Diamond Grading

###### 2018

Oct 21-25

###### 2019

Jan 6-10  
Mar 24-28  
Apr 28-May 2  
May 19-23  
Jun 23-27  
Aug 11-15  
Dec 15-19

##### GEM240L Gem Identification

###### 2018

Oct 28-Nov 1

###### 2019

Mar 31-Apr 4  
May 5-9  
Oct 20-24

##### GEM140L Pearl Grading

###### 2018

Oct 7

###### 2019

Apr 10  
Jun 12  
Oct 30

#### PROFESSIONAL DEVELOPMENT

##### Applied Jewelry Professional® (Intensive)

###### 2019

Jan 13-17  
Apr 14-18 (Arabic)  
Jun 16-20  
Jul 21-25 (Arabic)  
Sep 22-26  
Nov 24-28 (Arabic)

##### SWIFT Jewellery Design

###### 2019

Feb 10-14  
Jul 7-11  
Nov 10-14

### HONG KONG GIA.edu

#### GEMOLOGY

##### GEM 220L Colored Stone Grading

###### 2019

Sep 2-4

##### GEM 230L Diamond Grading

###### 2018

Nov 13-Dec 10 (N) (M, Tu, Th)

###### 2019

Feb 18-22  
Apr 1-30 (Cantonese) (N) M, Tu, Th  
Apr 22-26 (Mandarin)  
Sep 23-27  
Oct 21-25 (Mandarin)  
Nov 4-28 (Cantonese) (N) M, Tu, Th

##### GEM 240L Gem Identification

###### 2019

Sep 9-13

##### GEM 149L Pearl Grading

###### 2018

Dec 14

###### 2019

Apr 10 and 12 (Cantonese) (N) W, F  
Jun 14  
Jul 24 and 26 (Cantonese) (N) W, F

### LONDON London.GIA.edu

See Birmingham listing on page 16 for Colored Stone Grading, Diamond Grading and Pearl Grading lab class offerings.

##### GEM 240L Gem Identification

###### 2018

Oct 1-5

###### 2019

Jan 7-11  
Apr 29-May 3  
Aug 19-23  
Sep 30-Oct 4

### MUMBAI GIAIndia.in

#### GEMOLOGY

##### GEM 220L Colored Stone Grading

###### 2019

Feb 4-6  
Dec 2-4

##### GEM230L Diamond Grading

###### 2018

Oct 29-Nov 2  
Nov 19-23  
Dec 17-21

###### 2019

Jan 7-11  
Feb 18-22  
Mar 25-29  
Apr 22-26  
May 27-31  
Jun 24-28  
Jul 22-26  
Sep 9-13  
Aug 19-23  
Oct 21-25  
Nov 18-22  
Dec 23-27

##### GEM240L Gem Identification

###### 2019

Jan 28-Feb 1  
Nov 25-29

##### GEM140L Pearl Grading

###### 2019

Feb 7  
Dec 5

#### PROFESSIONAL DEVELOPMENT

##### Applied Jewelry Professional® (Intensive)

###### 2018

Oct 29-Nov 2  
Nov 26-30

###### 2019

Jan 14-18  
Feb 11-15  
Nov 11-15

##### SWIFT Jewellery Design

###### 2019

Jan 21-25  
Apr 15-19  
Sep 16-20  
Dec 2-6

##### Introduction to Merchandising

###### 2019

Jan 28-31  
May 13-16  
Nov 25-28

### SHANGHAI GIAtaiwan.com.tw

#### GEMOLOGY

##### GEM 220L Colored Stone Grading

###### 2018

Nov 15-17 (Chinese)

##### GEM 230L Diamond Grading

###### 2018

Nov 3-7 (Chinese)

##### GEM 240L Gem Identification

###### 2018

Nov 9-13 (Chinese)

### SURAT GIAIndia.in

#### GEMOLOGY

##### GEM 220L Colored Stone Grading

###### 2019

Apr 22-24  
Nov 18-20

##### GEM230L Diamond Grading

###### 2018

Oct 22-26  
Nov 12-16

###### 2019

Jan 14-18  
Apr 8-12  
May 13-17  
Jul 15-19  
Aug 12-16  
Oct 14-18  
Nov 11-15  
Dec 9-13

#### PROFESSIONAL DEVELOPMENT

##### Applied Jewelry Professional® (Intensive)

###### 2018

Oct 15-19

###### 2019

Jan 21-25  
Apr 15-19  
Jul 22-26

##### SWIFT Jewellery Design

###### 2019

Jan 28-Feb 1  
Apr 29-May 3

(N) = Nighttime; (S) = Saturday; (H) = Course includes both on-campus and self-paced study.

**Class Duration:** Please note class schedules may vary depending on holidays and breaks; please review the schedule carefully and plan accordingly.

\* Dates offered on a standby basis. Call for availability. You will be placed on a waiting list until 30 days prior to the start of your program or class when GIA can confirm your space availability. Schedules are subject to change without notice. For the latest schedules, see campus schedules at GIA.edu. Contact the campus to confirm availability and for additional information and details.

## LAB CLASSES AND PROFESSIONAL DEVELOPMENT (cont.)

### TAIPEI [GIAtaiwan.com.tw](http://GIAtaiwan.com.tw)

#### GEMOLOGY

##### **GEM 220L Colored Stone Grading**

**2018**

Oct 29-31 (Chinese)

**2019**

Jan 28-30 (Chinese) (M, Tu, W)

Jul 1-3 (Chinese) (M, Tu, W)

Oct 28-30 (Chinese) (M, Tu, W)

##### **GEM 230L Diamond Grading**

**2018**

Oct 15-19 (Chinese)

Oct 27-Nov 24 (Chinese) (S)

**2019**

Jan 14-18 (Chinese)

Mar 18-Apr 12 (Chinese) (N) ((M, W, F))

Jun 1-29 (Chinese) (S)

Jun 17-21 (Chinese)

Aug 12-Sep 6 (Chinese) (N) (M, W, F)

Oct 14-18 (Chinese)

Oct 19-Nov 16 (Chinese) (S)

##### **GEM 240L Gem Identification**

**2018**

Oct 22-26 (Chinese)

**2019**

Jan 21-25 (Chinese)

Jun 24-28 (Chinese)

Oct 21-25 (Chinese)

##### **GEM 149L Pearl Grading**

**2018**

Oct 20 (Chinese) (S)

**2019**

May 25 (Chinese) (S)

Oct 19 (Chinese) (S)

#### PROFESSIONAL DEVELOPMENT

##### **Applied Jewelry Professional® (Intensive)**

**2019**

Mar 4-15 (Chinese)

Aug 5-16 (Chinese)

### TOKYO [giaeducationjapan@gia.edu](mailto:giaeducationjapan@gia.edu)

#### GEMOLOGY

##### **GEM 230L Diamond Grading**

**2018**

Oct 15-19

Dec 10-14

**2019**

Feb 18-22

Apr 15-19

Jun 17-21

Aug 5-9

Oct 7-11

Dec 9-13

##### **GEM 130B Diamond Essentials Intensive**

**2018**

Oct 11-12

Dec 6-7

**2019**

Feb 14-15

Apr 11-12

Jun 13-14

Aug 1-2

Oct 3-4

Dec 5-6

## ATTENDING A GIA CAMPUS OUTSIDE THE UNITED STATES

To register in a program or lab class at a GIA® location outside the U.S., contact the respective campus directly.

GIA program and lab class curricula are standard worldwide, but schedules and specific offerings may vary by location.

To enroll in Distance Education courses where materials are written in English, submit your application to GIA in Carlsbad. To enroll in a Distance Education course where materials are written in any other language, please contact the respective GIA campus.

Contact information for GIA campuses can be found at [GIA.edu/locations](http://GIA.edu/locations)

# GIA ADVANCED SYNTHETIC DIAMOND SEMINAR

Learn from GIA Research Scientists  
the Latest Techniques to Identify  
Synthetic Diamonds



Gain in-depth knowledge of advanced diamond identification techniques, including hands-on experience with current production synthetic diamonds and the latest detection technology.

---

## 2019 SEMINARS

### DUBAI

Mar 17  
Mar 18

### LONDON

May 28-29  
Sep 9-10

### HONG KONG

Mar 5

### MUMBAI

Jan 21  
Jan 22  
Aug 19  
Aug 20

For more information, including cost and additional locations  
at [GIA.edu/advanced-synthetic-diamond-seminar](https://www.gia.edu/advanced-synthetic-diamond-seminar)



# Supporting Student Success

GIA® believes everyone deserves a chance at a quality education and a rewarding career. That's why we offer a variety of student and graduate support services, from financial aid, through career advisement and assistance.

## Funding Your Education with Scholarships

\$2 million in scholarships are available in 2019 to those who qualify.

- The next application period is February 1 to March 31, 2019. More than 350 full and partial scholarships were awarded in 2018.
- Select GIA on-campus programs are eligible for financial assistance including Federal Student Aid (FAFSA) and education benefits for veterans.

[Learn more at GIA.edu/gem-education-financial-aid](http://GIA.edu/gem-education-financial-aid)

**Scholarships Available for all GIA Education Courses**



ON-CAMPUS GEMOLOGY



ON-CAMPUS JEWELRY MANUFACTURING ARTS



DISTANCE EDUCATION



LAB CLASSES

 **ONE APPLICATION**

**Gets you considered for all appropriate scholarships, and you can reapply every year.**

## Gain an International Perspective

GIA campuses are located in some of the most important global hubs for gems and jewelry, and attract an international student body that will enrich your experience.

If you are living outside the United States and want to study at our Carlsbad or New York campuses, our international student advisors can help with the application and enrollment process, requirements necessary to attend GIA, the student visa application process, the Student and Exchange Visitor Information System, applying for your nonimmigrant visa, and more.



**GIA CAMPUSES:**  
**CARLSBAD NEW YORK BANGKOK**  
**HONG KONG LONDON MUMBAI TAIPEI**



## Career Support Beyond the Diploma

Along with a world-class education, you'll benefit from a comprehensive support system throughout your career. The GIA Career Services team can help you develop career plans, write resumes and more.

- **GIA Jewelry Career Fairs** – Connects students and graduates with dozens of companies looking to hire. Career Fairs in 2019 will take place in Carlsbad, London and New York.

[Learn more at careerfair.gia.edu](http://careerfair.gia.edu)

- **Gem & Jewelry Career Center** – The premier online job board exclusively for the gem and jewelry industry.

[Search for or post a job at gia.edu/gem-job](http://gia.edu/gem-job)

- **Job Seeker Handbook** – Resume, interviewing, and portfolio presentation tips tailored to the gem and jewelry industry.

[Download your copy at gia.edu/job-handbook](http://gia.edu/job-handbook)



## Join a Global Alumni Network

When you graduate from a GIA program, you join an invaluable global alumni network. The GIA Alumni Association encourages lifelong relationships, provides opportunities for continuing education and fosters networking throughout the gem and jewelry industry.

[Stay connected at GIA.edu/gia-alumni](http://GIA.edu/gia-alumni)



*"The GIA Alumni Association is a place where graduates can connect with a new supplier or client, make a new friend, or educate themselves with new and ongoing developments in the trade."*

**Dr. Ken Fujita, GIA GG**  
President & CEO, Fujita Co., Ltd  
GIA Alumni Association Japan Chapter, President



**65+**  
**CHAPTERS**  
**AROUND THE GLOBE**



**130,000+**  
**ALUMNI**  
**MEMBERS**



Gemological Institute of America®  
The Robert Mouawad Campus  
5345 Armada Drive  
Carlsbad, CA 92008

Non-Profit Org  
U.S. Postage  
PAID  
Permit #1615  
Van Nuys, CA

 **GIA**®  
**EDUCATION**  
Quarterly

## Join a Diverse and Dynamic Industry

Gem and jewelry companies need professionals in sales, management, marketing, administration and accounting – as well as gemologists and bench jewelers.

Search for your next job at the GIA Gem & Jewelry Career Center.

[GIA.edu/gem-job](http://GIA.edu/gem-job)



[youtube.com/  
officialgiachannel](https://youtube.com/officialgiachannel)



[facebook.com/  
giaeducation](https://facebook.com/giaeducation)



[@GIAnews](https://twitter.com/GIAnews)



[linkedin.com/  
company/gia](https://linkedin.com/company/gia)



[pinterest.com/  
giapins](https://pinterest.com/giapins)



[GIA.edu/  
subscribe](https://GIA.edu/subscribe)